

# KENSINGTON

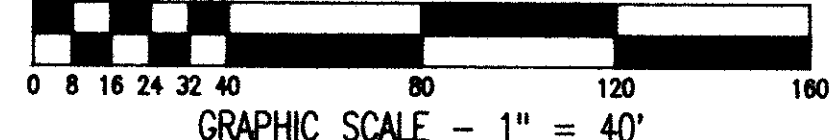
## OF PALM BEACH POLO AND COUNTRY CLUB WELLINGTON P.U.D.

IN SECTION 14 - TOWNSHIP 44 SOUTH - RANGE 41 EAST  
PALM BEACH COUNTY - FLORIDA

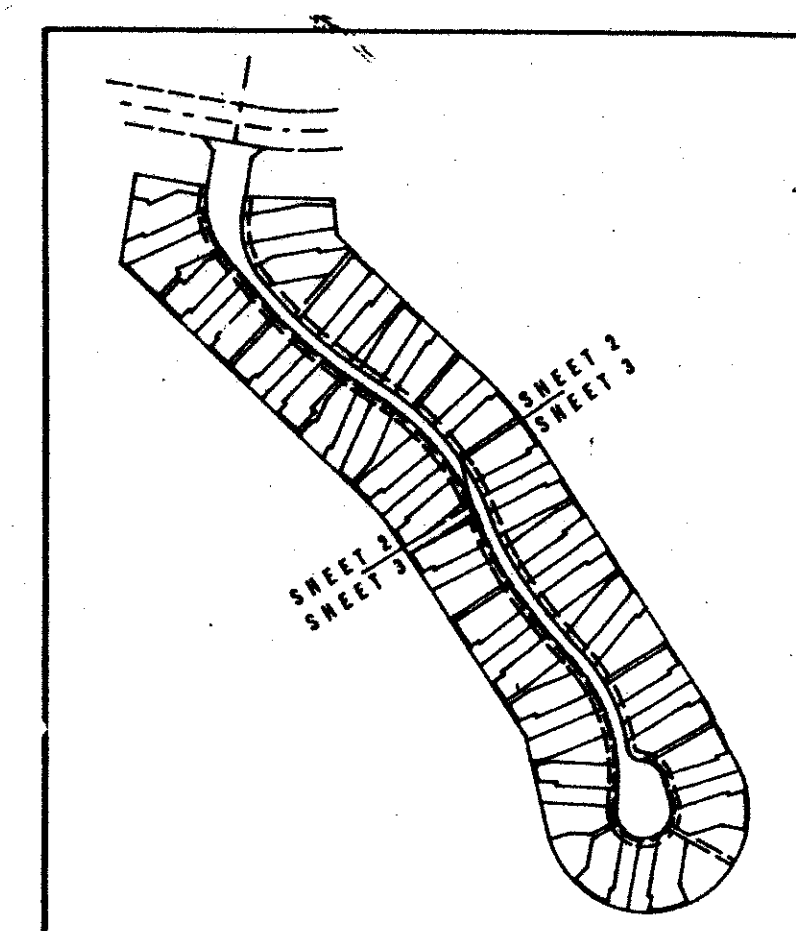
IN 3 SHEETS

SHEET 2

MARCH - 1988



UNPLATTED

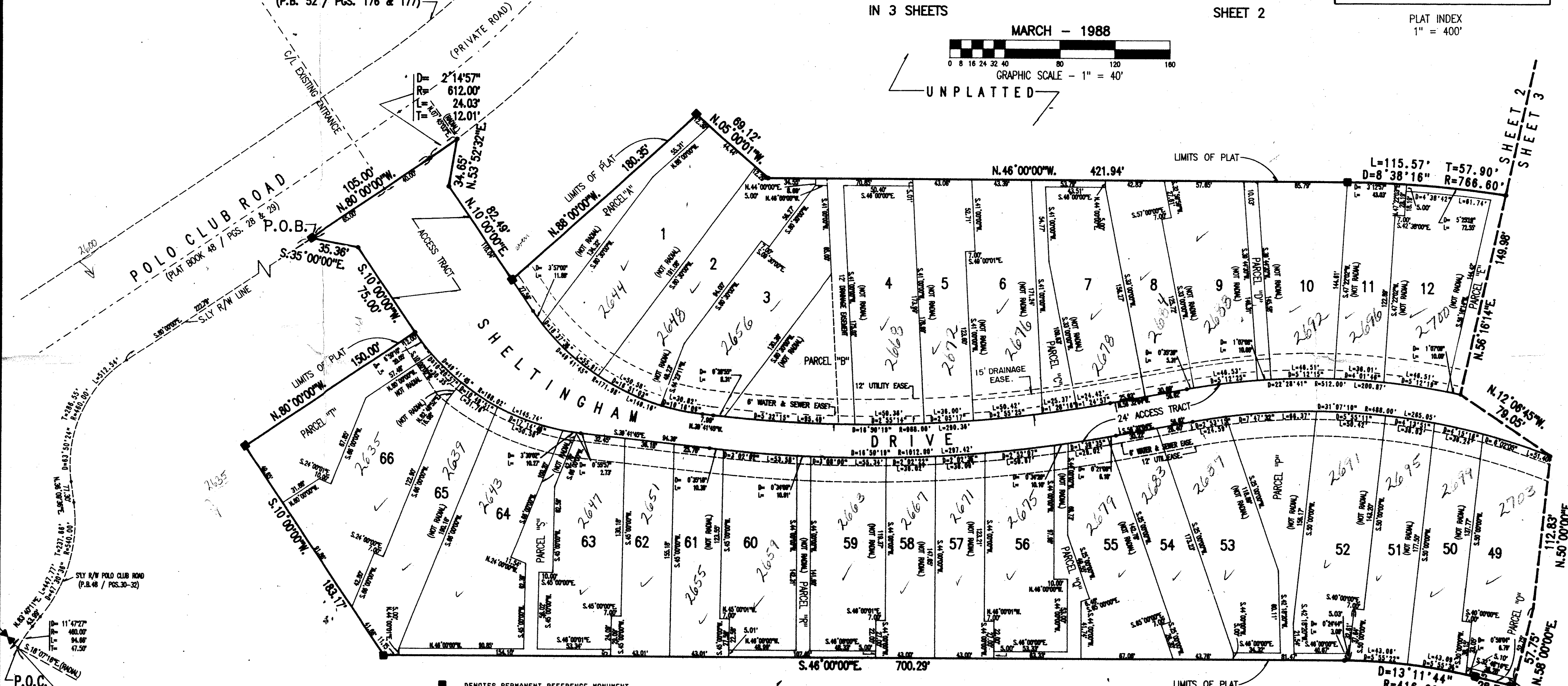


PLAT INDEX  
1" = 400'

WINDSOR WAY - PLAT NO. 2  
OF PALM BEACH POLO AND COUNTRY CLUB  
WELLINGTON - P.U.D.  
(P.B. 52 / PGS. 176 & 177)

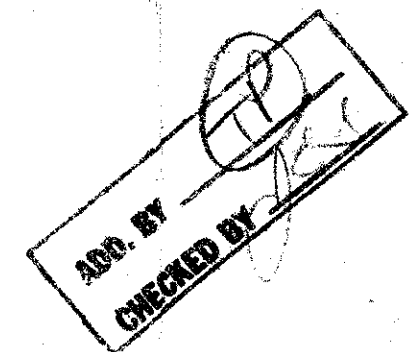
POLO CLUB ROAD  
(PLAT BOOK 48 / PGS. 28 & 29)  
P.O.B.  
S. 35° 00' 00" E  
S. 10° 00' 00" W  
150.00'

SHELTINGHAM  
DRIVE



■ DENOTES PERMANENT REFERENCE MONUMENT  
 ○ DENOTES PERMANENT CONTROL POINT  
 ALL BEARINGS SHOWN HEREON ARE RELATIVE TO AN ASSUMED MERIDIAN USED THROUGHOUT WELLINGTON - P.U.D. THE WEST LINE OF SECTION 14-44-41 IS ASSUMED TO BEAR NORTH 01° 03' 05" EAST.  
 BUILDING SETBACK LINES SHALL BE AS REQUIRED BY PALM BEACH COUNTY ZONING REGULATIONS.  
 NO BUILDINGS, NOR ANY KIND OF CONSTRUCTION, SHALL BE PLACED ON UTILITY, DRAINAGE, WATER, OR SEWER EASEMENTS.  
 NO STRUCTURES, TREES OR SHRUBS SHALL BE PLACED IN THE DRAINAGE, WATER AND SEWER, OR UTILITY EASEMENTS FOR WATER OR SEWER.  
 APPROVAL OF LANDSCAPING ON UTILITY EASEMENTS OTHER THAN WATER AND SEWER SHALL BE ONLY WITH THE APPROVAL OF ALL UTILITIES OCCUPYING SAME.  
 WHERE DRAINAGE, UTILITY, WATER, OR SEWER EASEMENTS CROSS, DRAINAGE EASEMENTS SHALL TAKE PRECEDENCE.  
 ACME IMPROVEMENT DISTRICT SHALL HAVE THE RIGHT TO CONSTRUCT AND MAINTAIN WATER AND SEWER FACILITIES WITHIN UTILITY EASEMENTS AND ACCESS TRACTS AS SHOWN HEREON.  
 THERE MAY BE ADDITIONAL RESTRICTIONS THAT ARE NOT RECORDED ON THIS PLAT THAT MAY BE FOUND IN THE PUBLIC RECORDS OF PALM BEACH COUNTY, FLORIDA.

UNPLATTED



SHEET 2  
SHEET 3

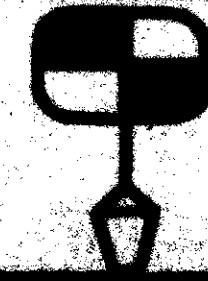
0332-069

62/70

Parcel 71  
Wellington PUD  
Pet. 86-32

SUBDIVISION Kensington @ PB 48  
 BOOK 62 70 100B  
 PAGE 62 AR 33414  
 SD 86-32  
 AND MAKE Wellington PUD TR 730

### KENSINGTON


**Dailey-Fotony, Inc.**  
 land surveyors, planners, engineers  
2000 1200 Avenue North, Suite 2 - Lake Worth, Florida 33463  
 Phone 561-965-8100